

# What happens to our rubbish?

Once a week the bin lorry comes to your house to empty your wheelie bin. The bin lorry takes all the rubbish to the landfill site. The landfill site is a big hole in the ground, and all the rubbish in the big lorry gets dumped into it.



**Diggers spread out the rubbish and squash it all down to make room for more rubbish. Once it is full up, it is covered with soil to hide it.**



**The problem is, all our landfill sites are getting fuller and fuller, and soon we will need some new ones. Landfills are ugly, smelly and dangerous.**

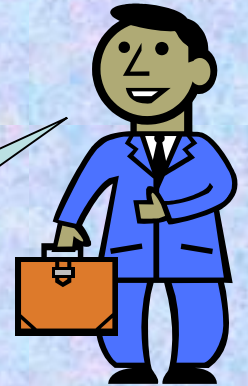


**It wouldn't be very nice if a new landfill site was opened near your house, would it??!**

# What do you think?



Landfills are usually holes left over from quarries. We don't have to dig new holes.

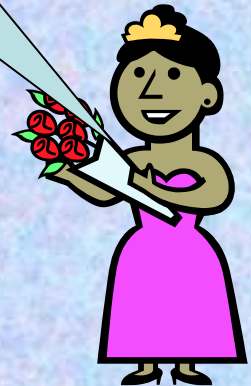


We have to put our rubbish somewhere.



Some of the waste will take hundreds, even thousands of years to rot away.

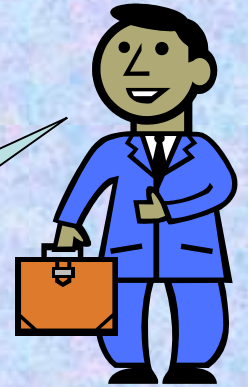
Landfill is a cheap and easy option!



# What do you think?



Landfill produces a type of gas called methane which can be explosive and damages the environment.



Many of the landfill holes will soon be full.



We soon need to find new landfills to use.

I don't want to live near a landfill, they are dirty, smelly and noisy.



# Where would we put new landfills?



**Here?**

# Where would we put new landfills?



**Here?**



What should

we do?